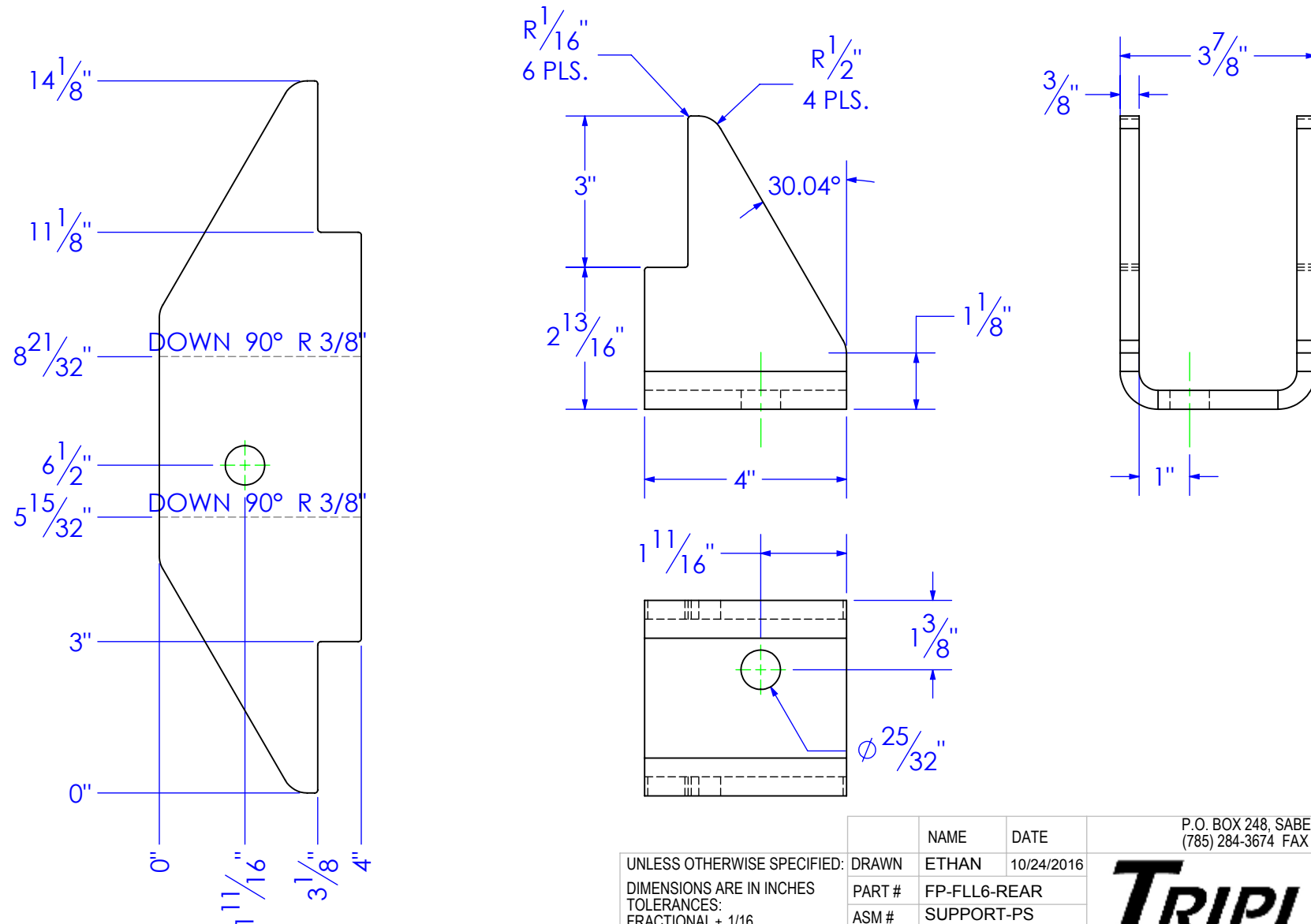


PART NUMBER	DESCRIPTION	MATERIAL
FP-FLL6-REAR SUPPORT-PS	LEVEL LOK, REAR SUPPORT, FLL-6, PS	3/8" HRS

REVISIONS			
REV.	DESCRIPTION	DATE	APPROVED
A	INITIAL RELEASE	10/18/2016	



**PROPRIETARY AND CONFIDENTIAL**  
 THE INFORMATION CONTAINED IN THIS  
 DRAWING IS THE SOLE PROPERTY OF TRIPLE  
 C INC. ANY REPRODUCTION IN PART OR  
 AS A WHOLE WITHOUT THE WRITTEN  
 PERMISSION OF TRIPLE C, INC IS PROHIBITED.

UNLESS OTHERWISE SPECIFIED:  
 DIMENSIONS ARE IN INCHES  
 TOLERANCES:  
 FRACTIONAL  $\pm 1/16$   
 ANGULAR: MACH  $\pm 1$  BEND  $\pm$   
 TWO PLACE DECIMAL  $\pm 010$   
 THREE PLACE DECIMAL  $\pm 005$

MATERIAL 3/8" HRS  
 DO NOT SCALE DRAWING

	NAME	DATE
DRAWN	ETHAN	10/24/2016
PART #	FP-FLL6-REAR	
ASM #	SUPPORT-PS	
COMMENTS:		
LEVEL LOK, REAR SUPPORT, FLL-6, PS		

P.O. BOX 248, SABETHA, KS 66534  
 (785) 284-3674 FAX (785) 284-3931

**TRIPLE C**  
 INC

SIZE	DWG. NO.	REV
A	90-1863-4	A
SCALE: 1:4	WEIGHT: 4.18	SHEET 1 OF 1